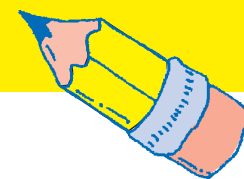


Helpful Hints as your child moves from Early Intervention to Pre-School



There will always be change, or **TRANSITION**, in your child's life. It is part of the process of growing. From the day they are born, children learn about their world and how to do things for themselves. This development of awareness and independence results in transition throughout their lives. This pamphlet will help you start thinking about the transition from Early Intervention to Pre-School. With a little advanced planning, this will be a smooth and expected event.

- 1.** The 0-3 years go by quickly. Think about transition early. Start asking the question, "What will happen to my child and me when my child leaves Early Intervention?"
- 2.** Be ready to plan for the transition. When your child is 2 1/2, your Early Intervention Service coordinator will talk about transition with you, and together you will develop a plan.
- 3.** Be ready to take an active role in the decisions regarding your child's developmental assessment, called a multi-factored evaluation. This will determine if your child qualifies for special education.
- 4.** Know and understand your child's rights. You'll be given a copy of the booklet: [Who's IDEA Is It Anyway?](#) **IDEA** is the **Individuals with Disabilities Education Act**. Discuss any questions you have about IDEA with your Early Intervention Service Coordinator or your school district representative.
- 5.** You will be involved with your school district for a long time, so learn about the district's responsibilities. Pre-School Special Education is quite different from Early Intervention. It's important you know the difference.

- 6.** No one knows your child better than you do. Be prepared to discuss your child's strengths and abilities at IEP (Individual Education Plan) meetings. An IEP will be developed if your child is eligible for Pre-School Special Education Services. Sharing the things your child likes and dislikes can help the school staff to understand and serve your child better.
- 7.** Don't forget that you, too, are going through change, or transition, as well. The Early Intervention Program is very nurturing for families, as well as for children. Pre-School Special Education is more child-focused, and typically involves your child attending classes several days each week. You will be saying goodbye to the professionals who have been significant in your life and meeting a new group of professionals. Give yourself time to adjust to the change and to develop new relationships.
- 8.** Remember that the Early Intervention Program is available to assist you during transition, and afterwards. Just give us a call at **419/381-8320** if you have questions or need assistance. We'll contact you also after you leave Early Intervention, to let you know we continue to be available to you and your family.



Lucas County
**Early
Intervention
Program**